

**STANDARD ARRIVAL CHART - INSTRUMENT (STAR)**

TRANSITIONAL ALTITUDE  
**7000'**  
TRANSITIONAL LEVEL  
**ATC**

KIMBERLEY TWR: 118.20  
APN: 122.65  
APP: 119.40  
BLOEMFONTEIN APP: 124.30

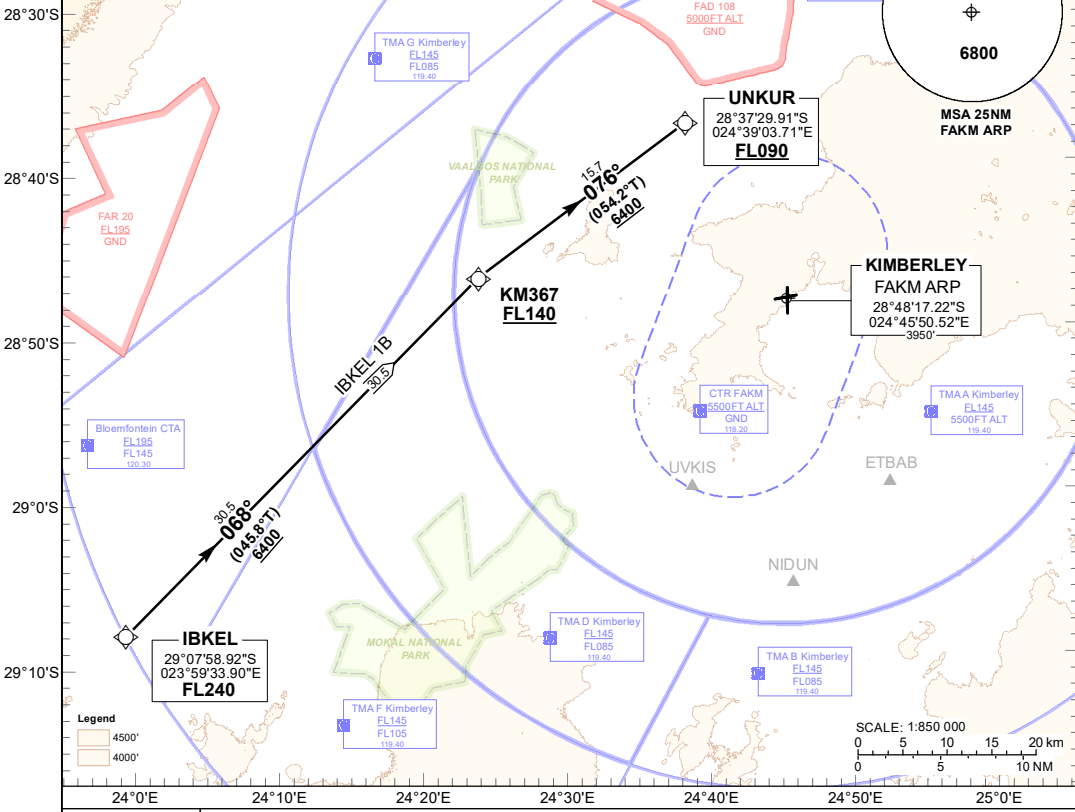
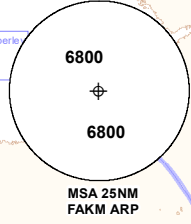
**KIMBERLEY RNAV (GNSS) RWY 20**  
IBKEL 1B



**RNAV 1 REQUIRED**

**ELEV, ALT & HGT IN FEET**  
DIST IN NM  
BRG ARE MAG  
VAR 22°W (2020)

- NOTE**
1. If unable to comply with SID or STAR, notify ATC.
  2. Cross the CTR boundary at or above 5500' ALT.
  3. SIDs and STARs only in force when surveillance RADAR is in operation.



**IBKEL 1B:**  
RWY 20

Leave IBKEL for KM367. At KM367 route to UNKUR. At UNKUR continue on the RNAV (GNSS) APCH RWY 20.

**COMMUNICATION FAILURE PROCEDURE (Squawk 7600)**

**Before IBKEL:** Proceed to IBKEL and continue on the "After IBKEL" Communication Failure Procedure.

**After IBKEL:** Continue on the IBKEL 1B RNAV (GNSS) RWY 20 STAR to UNKUR. At UNKUR route to GADSO. At GADSO comply with the RNP APCH RWY 20 Communication Failure Procedure.

CHANGE: NEW Procedure